

Testing services

for coatings
for bonding

Mechanical-technical tests

Tests on standard test samples

- Tensile (e.g. DIN EN ISO 527)
- Lap shear (e.g. DIN EN 1465)
- Peel (e.g. DIN EN 1939)
- Compression (e.g. DIN EN 604)
- Bending (e.g. DIN EN ISO 178)
- ...

Tests on use-oriented test samples or components

- Static tests – tensile, compression, shear, peel and bending
- Fatigue/dynamic tests

Further methods

- Thermal analysis (DSC)
- Dynamic mechanical analysis (DMA)
- Contact angle measurement
- Roughness measurement
- Shore hardness
- Cross cut test
- Rheological analysis
- FTIR
- Helium-Leak-Test
- ...

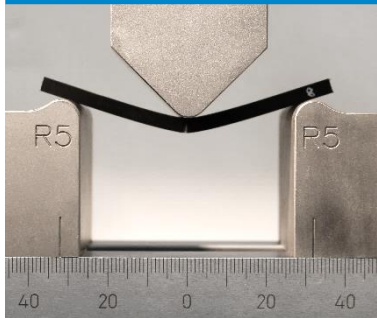
Applications

Biomedical engineering

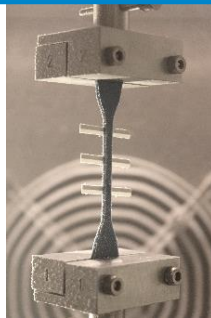
- Degree of cross-linking of casting compound
- Surgical instruments
- Patches and hydrogels
- Syringe/Luer tubing connections
- Dental implants
- Lens bonding
- ...

Automotive/mechanical engineering

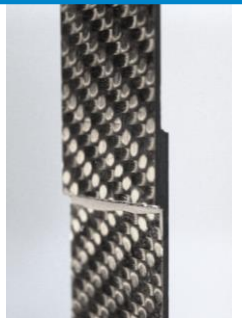
- Adhesive tapes
- Cables
- Packaging material
- Tools
- Electronic devices
- ...



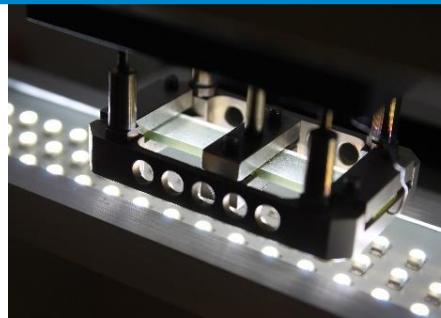
Bending test on PP-GF according to DIN EN ISO 178



Tensile test on silicone adhesive according to DIN 53504 at -40°C



Lap shear test on CFK according to DIN EN 1465



Dynamic mechanical analysis (DMA) of epoxy resin adhesive according to DIN EN ISO 6721